

IES Report

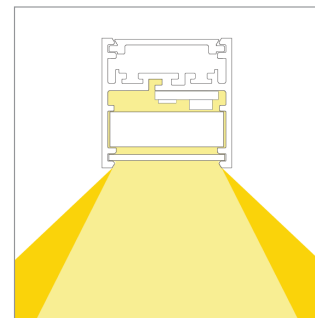
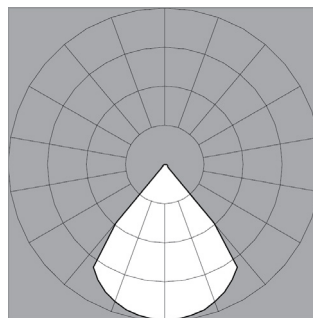
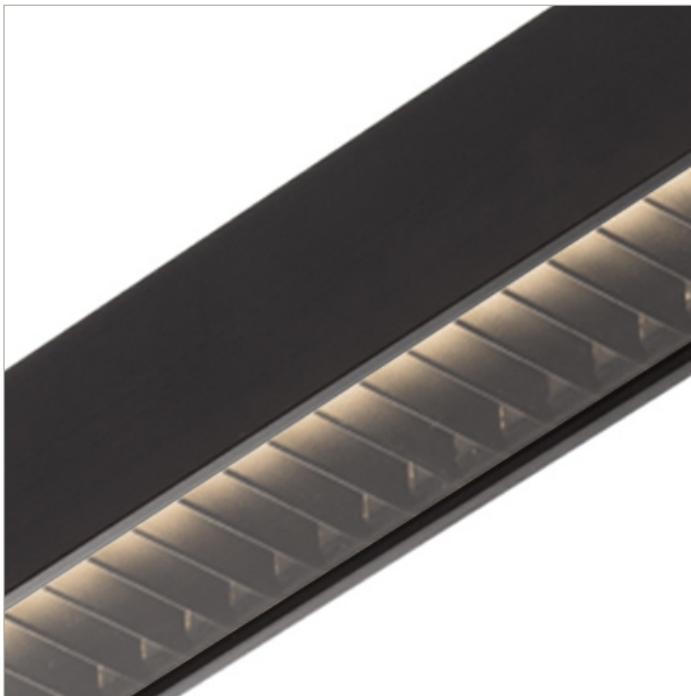
BoxRail® | 207 | Black Baffle, down | 80 CRI | LO

207-BX-XX-4-48-XX-XX-XX-X-X-Z-LO-35-BB-X-BL-X

	2700K	3000K	3500K	4000K
Efficacy - Lumens per Watt	35	36	37	37
Total Lumens, 4' rail length (1219mm)	498	513	524	524
Lumens per foot (305mm)	124	128	131	131
Input Power (W), 4' rail length (1219mm)	14.4	14.4	14.4	14.4
Watts per foot (305mm)	3.6	3.6	3.6	3.6
CRI	82	82	82	82

Due to the large number of options in Vode's product offering, most Vode IES reports are factored reports prepared from source reports. Source reports are the IES test reports prepared for Vode by an NVLAP accredited photometric test laboratory. Factored reports are based on data from the Vode source reports.

If the data above is in black, it is directly from a Vode source report. If it is in grey, it is factored from Vode source reports. Reference details on Vode source reports can be found on the [IES File Finder](#) page on [vode.com](#).



IES Report

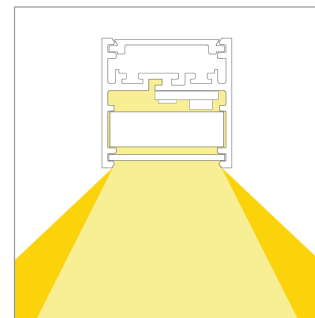
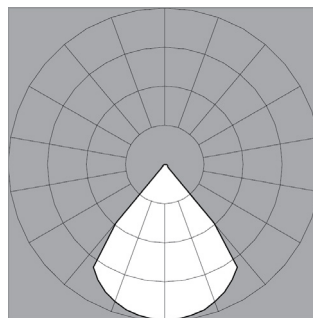
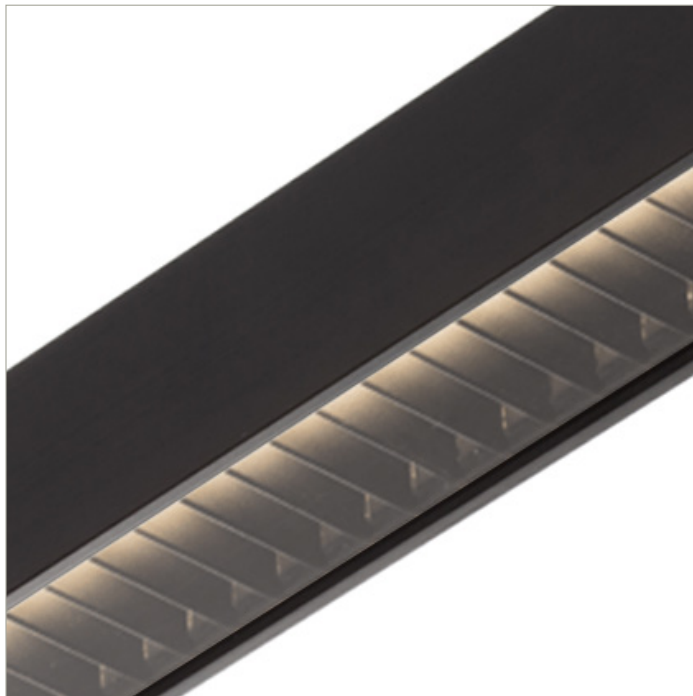
BoxRail® | 207 | Black Baffle, down | 80 CRI | SO

207-BX-XX-4-48-XX-XX-XX-X-X-Z-SO-35-BB-X-BL-X

	2700K	3000K	3500K	4000K
Efficacy - Lumens per Watt	40	41	42	42
Total Lumens, 4' rail length (1219mm)	995	1027	1048	1048
Lumens per foot (305mm)	249	257	262	262
Input Power (W), 4' rail length (1219mm)	25.3	25.3	25.3	25.3
Watts per foot (305mm)	6.4	6.4	6.4	6.4
CRI	82	82	82	82

Due to the large number of options in Vode's product offering, most Vode IES reports are factored reports prepared from source reports. Source reports are the IES test reports prepared for Vode by an NVLAP accredited photometric test laboratory. Factored reports are based on data from the Vode source reports.

If the data above is in black, it is directly from a Vode source report. If it is in grey, it is factored from Vode source reports. Reference details on Vode source reports can be found on the [IES File Finder](#) page on [vode.com](#).



IES Report

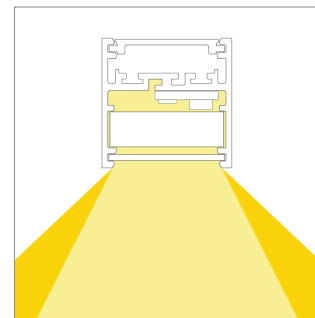
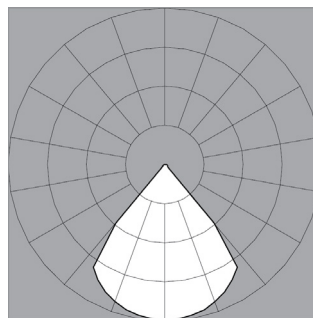
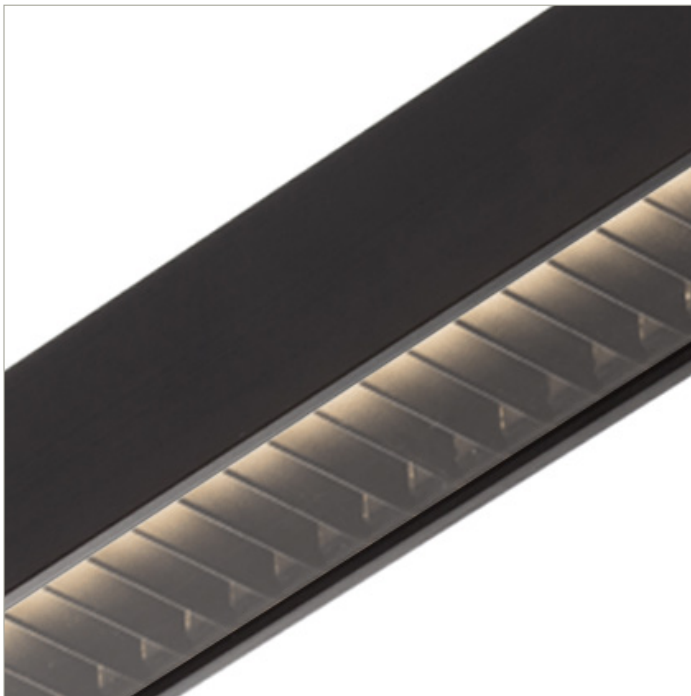
BoxRail® | 207 | Black Baffle, down | 80 CRI | HO

207-BX-XX-4-48-XX-XX-XX-X-X-Z-HO-35-BB-X-BL-X

	2700K	3000K	3500K	4000K
Efficacy - Lumens per Watt	37	38	39	39
Total Lumens, 4' rail length (1219mm)	1891	1951	1991	1991
Lumens per foot (305mm)	473	488	498	498
Input Power (W), 4' rail length (1219mm)	51.6	51.6	51.6	51.6
Watts per foot (305mm)	12.9	12.9	12.9	12.9
CRI	82	82	82	82

Due to the large number of options in Vode's product offering, most Vode IES reports are factored reports prepared from source reports. Source reports are the IES test reports prepared for Vode by an NVLAP accredited photometric test laboratory. Factored reports are based on data from the Vode source reports.

If the data above is in black, it is directly from a Vode source report. If it is in grey, it is factored from Vode source reports. Reference details on Vode source reports can be found on the [IES File Finder](#) page on [vode.com](#).



IES Report

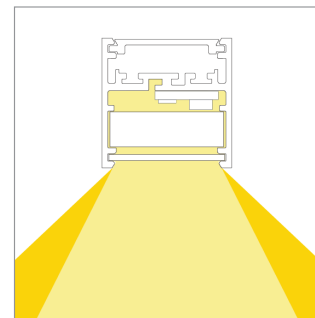
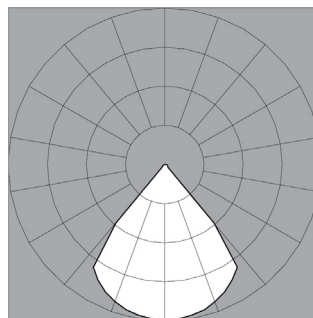
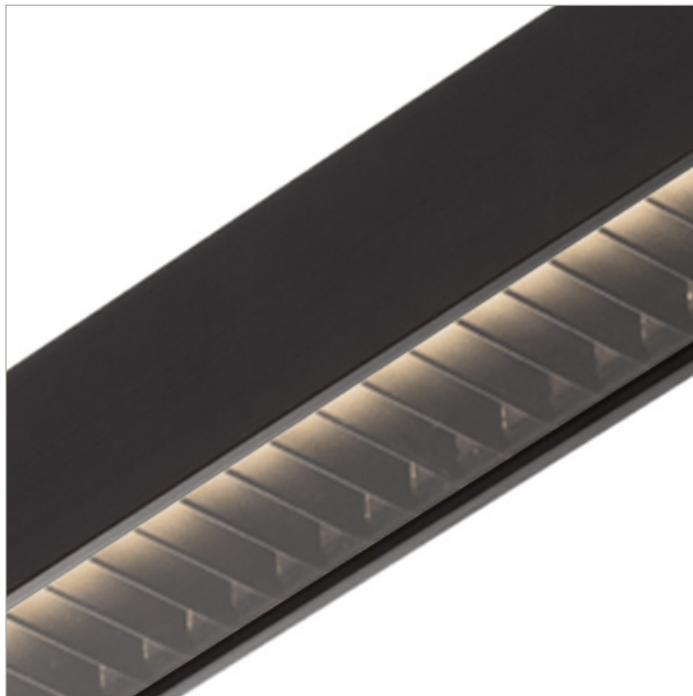
BoxRail® | 207 | Black Baffle, down | 90 CRI | LO

207-BX-XX-4-48-XX-XX-XX-X-X-Z-LO-359-BB-X-BL-X

	2700K	3000K	3500K	4000K
Efficacy - Lumens per Watt	30	31	32	32
Total Lumens, 4' rail length (1219mm)	429	443	452	456
Lumens per foot (305mm)	107	111	113	114
Input Power (W), 4' rail length (1219mm)	14.4	14.4	14.4	14.4
Watts per foot (305mm)	3.6	3.6	3.6	3.6
CRI	94	94	94	94

Due to the large number of options in Vode's product offering, most Vode IES reports are factored reports prepared from source reports. Source reports are the IES test reports prepared for Vode by an NVLAP accredited photometric test laboratory. Factored reports are based on data from the Vode source reports.

If the data above is in black, it is directly from a Vode source report. If it is in grey, it is factored from Vode source reports. Reference details on Vode source reports can be found on the [IES File Finder](#) page on [vode.com](#).



IES Report

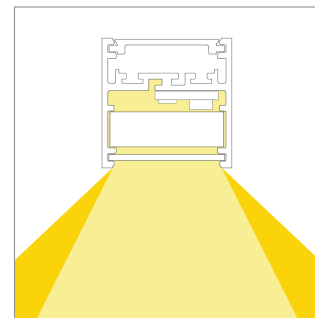
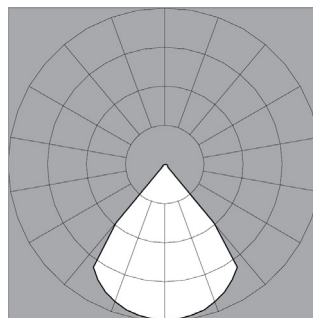
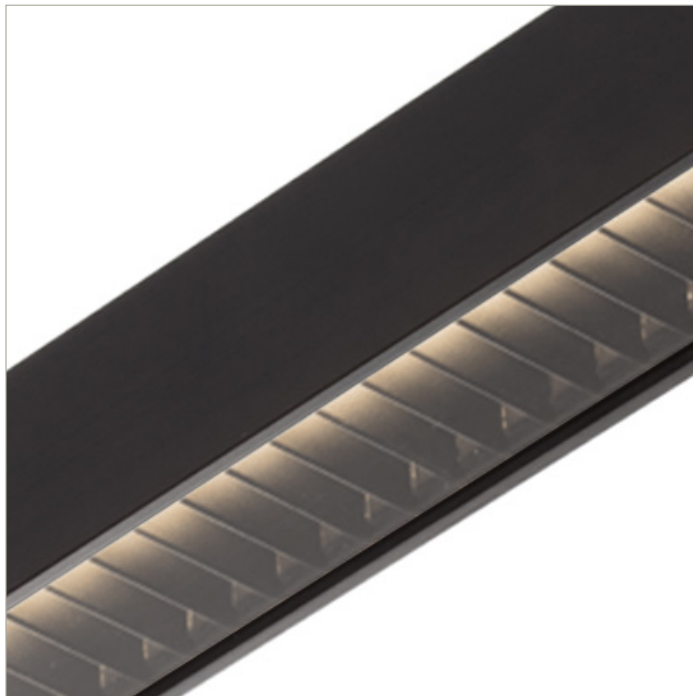
BoxRail® | 207 | Black Baffle, down | 90 CRI | SO

207-BX-XX-4-48-XX-XX-XX-X-X-Z-SO-359-BB-X-BL-X

	2700K	3000K	3500K	4000K
Efficacy - Lumens per Watt	34	36	36	37
Total Lumens, 4' rail length (1219mm)	858	885	903	912
Lumens per foot (305mm)	215	221	226	228
Input Power (W), 4' rail length (1219mm)	25.3	25.3	25.3	25.3
Watts per foot (305mm)	6.4	6.4	6.4	6.4
CRI	94	94	94	94

Due to the large number of options in Vode's product offering, most Vode IES reports are factored reports prepared from source reports. Source reports are the IES test reports prepared for Vode by an NVLAP accredited photometric test laboratory. Factored reports are based on data from the Vode source reports.

If the data above is in black, it is directly from a Vode source report. If it is in grey, it is factored from Vode source reports. Reference details on Vode source reports can be found on the [IES File Finder](#) page on [vode.com](#).



IES Report

BoxRail® | 207 | Black Baffle, down | 90 CRI | HO

207-BX-XX-4-48-XX-XX-XX-X-X-Z-HO-359-BB-X-BL-X

	2700K	3000K	3500K	4000K
Efficacy - Lumens per Watt	32	33	34	34
Total Lumens, 4' rail length (1219mm)	1630	1682	1716	1733
Lumens per foot (305mm)	408	420	429	433
Input Power (W), 4' rail length (1219mm)	51.6	51.6	51.6	51.6
Watts per foot (305mm)	12.9	12.9	12.9	12.9
CRI	94	94	94	94

Due to the large number of options in Vode's product offering, most Vode IES reports are factored reports prepared from source reports. Source reports are the IES test reports prepared for Vode by an NVLAP accredited photometric test laboratory. Factored reports are based on data from the Vode source reports.

If the data above is in black, it is directly from a Vode source report. If it is in grey, it is factored from Vode source reports. Reference details on Vode source reports can be found on the [IES File Finder](#) page on [vode.com](#).